

## BENEFITS

### High Efficiency

Industry leading panel efficiency of 16.5%

### Attractive Design

Unique design combines high efficiency and an elegant, all-black appearance

### More Power

Delivers up to 50% more power per unit area than conventional solar panels

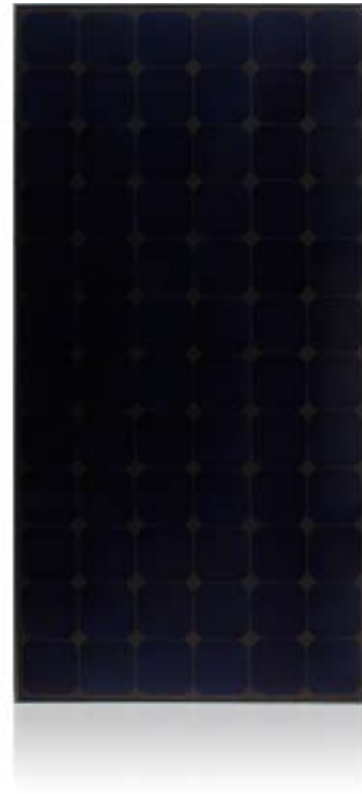
### Reliable and Robust Design

Proven materials, tempered front glass, and a sturdy anodized frame allow panel to operate reliably in multiple mounting configurations



## 205 SOLAR PANEL

EXCEPTIONAL EFFICIENCY AND APPEARANCE



The SunPower 205 Solar Panel provides a revolutionary combination of high efficiency and attractive, uniform appearance. Utilizing 72 next generation SunPower all-back contact solar cells and an all-black backsheet, the SunPower 205 elegantly delivers an unprecedented total panel conversion efficiency of 16.5%. The panel's reduced voltage-temperature coefficient and exceptional low-light performance attributes provide far higher energy delivery per peak power than conventional panels.

### SunPower's High Efficiency Advantage - up to 50% More Power

Comparable systems covering 25 m <sup>2</sup> / 270 ft <sup>2</sup>		
	Conventional	SunPower
Watts / Panel	165	205
Efficiency	12.0%	16.5%
kWs	3.0	4.1

### Electrical Data

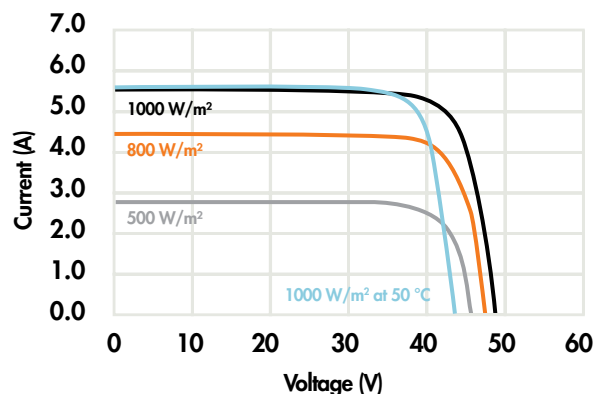
Measured at Standard Test Conditions (STC): irradiance of 1000 W/m<sup>2</sup>, air mass 1.5g, and cell temperature 25 C

Peak Power (+/-5%)	Pmax	205 W
Rated Voltage	Vmp	40.0 V
Rated Current	Imp	5.13 A
Open Circuit Voltage	Voc	47.8 V
Short Circuit Current	Isc	5.53 A
Maximum System Voltage	IEC, UL	1000 V, 600 V
Temperature Coefficients		
	Power	-0.38% /° C
	Voltage (Voc)	-132.5m V/° C
	Current (Isc)	3.5m A/° C
Series Fuse Rating		15 A
Peak Power per Unit Area		169 W/m <sup>2</sup> , 15.3 W/ft <sup>2</sup>
CEC PTC Rating		189.0 W

### Mechanical Data

Solar Cells	72 SunPower all-back contact monocrystalline
Front Glass	3.2mm (1/8 in.) tempered
Junction Box	IP-65 rated with 3 bypass diodes
Output Cables	900mm length / MultiContact connectors
Frame	Anodized aluminum alloy type 6063
Weight	15kg, 33lbs

### IV Curve



Current/voltage characteristics with dependence on irradiance and module-temperature.

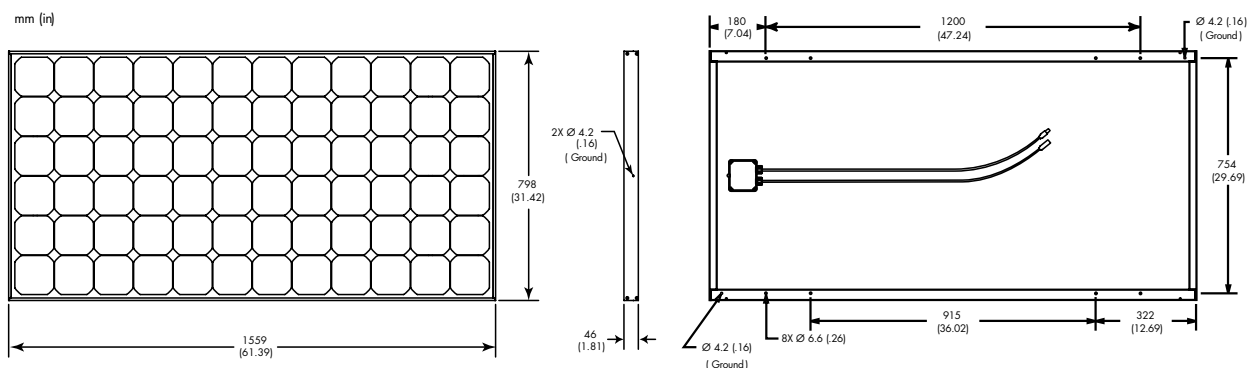
### Tested Operating Conditions

Temperature	-40° C to +90° C (-40° F to +194° F)
Max load	50 psf (2400 pascals) front and back
Impact Resistance	Hail -25 mm (1 in.) at 23 m/s (52 mph)

### Warranty and Certifications

Warranty	25 year limited power warranty 10 year limited product warranty
Certifications	IEC 61215 , Safety tested IEC 61730; UL listed (UL 1703), Class C Fire Rating

### Dimensions



**CAUTION: READ SAFETY AND INSTALLATION INSTRUCTIONS BEFORE USING THE PRODUCT.** Go to [www.sunpowercorp.com/panels](http://www.sunpowercorp.com/panels) for details

### About SunPower

SunPower designs, manufactures and delivers high-performance solar electric technology worldwide. Our high-efficiency solar cells generate up to 50 percent more power than conventional solar cells. Our high-performance solar panels, roof tiles and trackers deliver significantly more energy than competing systems.